

## Domino des panneaux



### Objectif pédagogique :

Se familiariser avec les panneaux et signaux lumineux fréquemment rencontrés

### Préparation du matériel :

Imprimer les 4 pages en recto-verso  
Plastifier les 4 feuilles  
Découper chaque pièce du domino

### Nombre de joueurs : 2 à 4

### Déroulement :

Chaque joueur prend 6 dominos

Le double feu vert commence

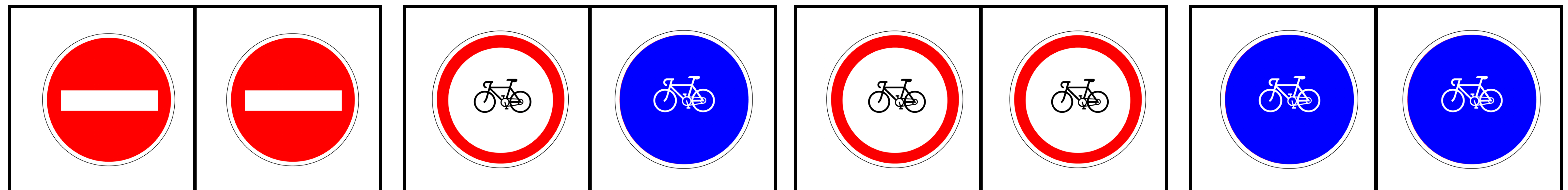
Si pas de double feu vert, double feu orange

Si pas de double feu orange, double feu rouge

Si pas de double feu rouge, double sens interdit

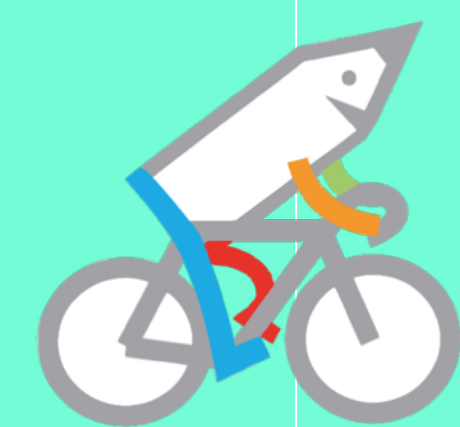
Si pas de double sens interdit, double piste cyclable

...





USEP 94



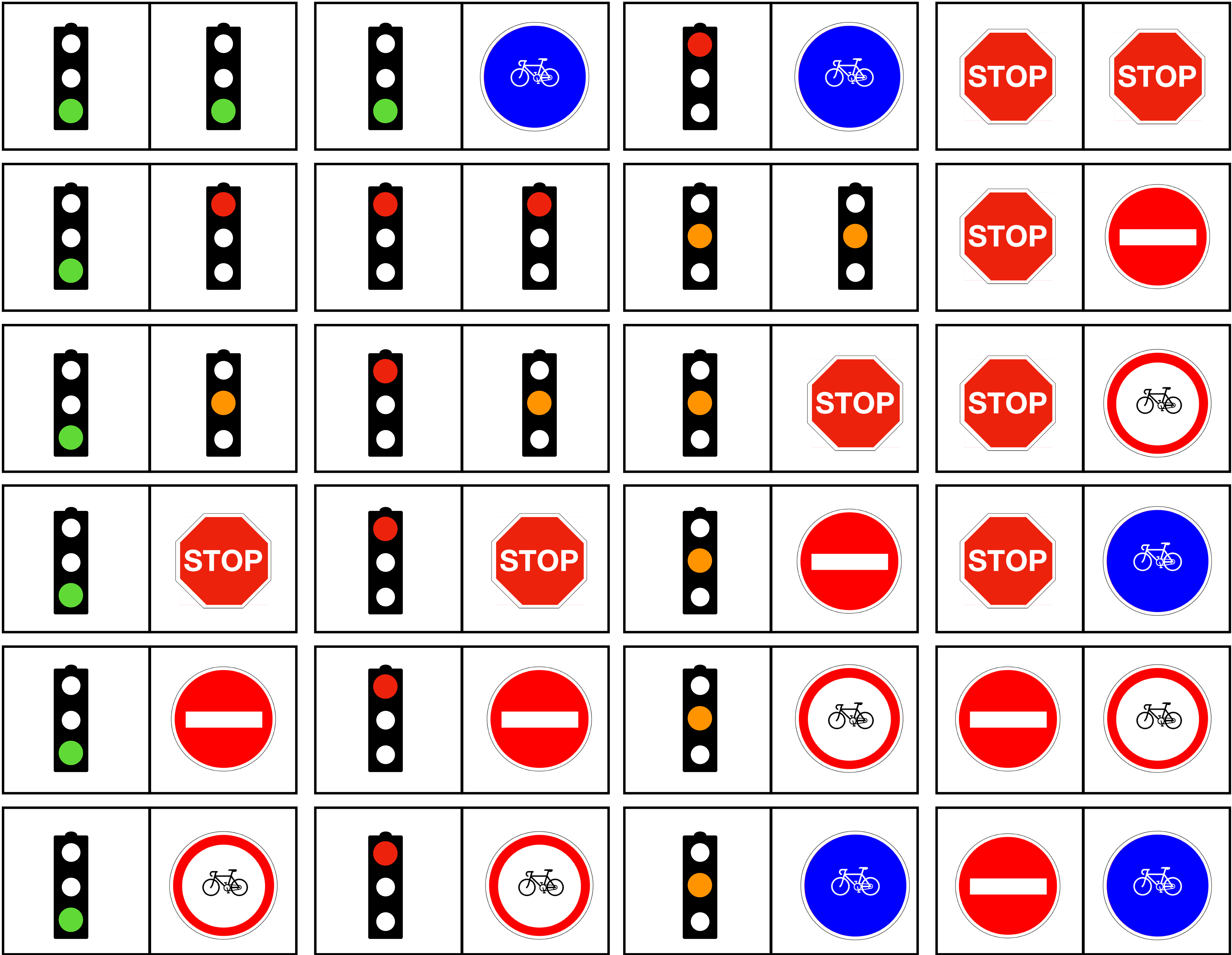
USEP 94



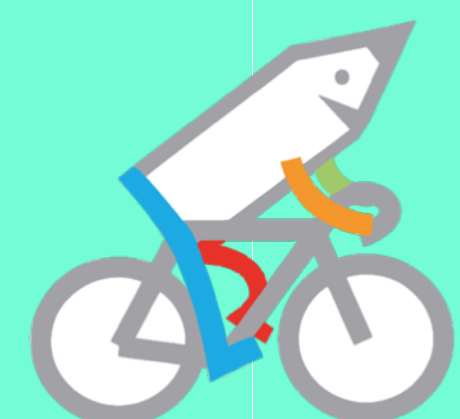
USEP 94



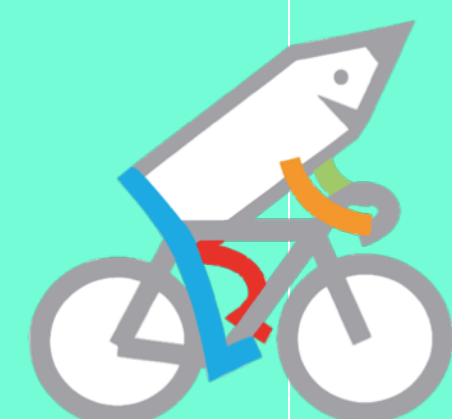
USEP 94







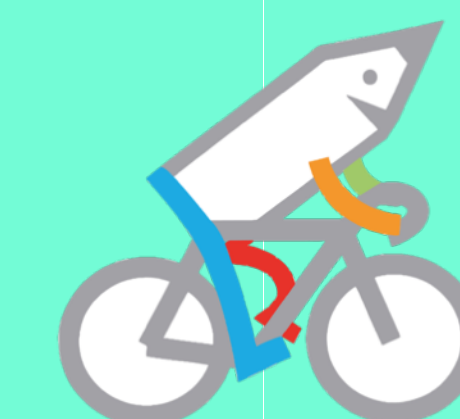
USEP 94



USEP 94



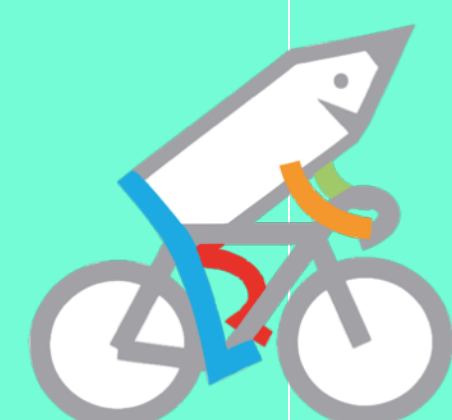
USEP 94



USEP 94



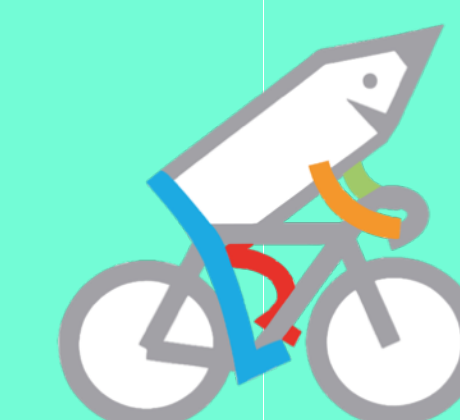
USEP 94



USEP 94



USEP 94



USEP 94



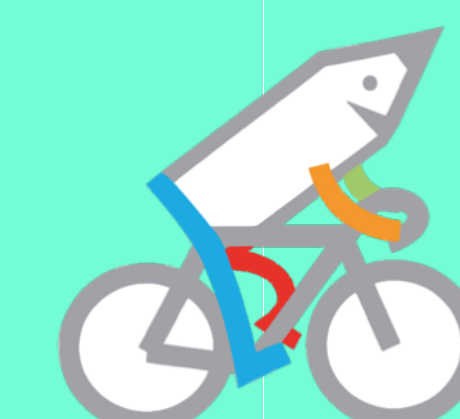
USEP 94



USEP 94



USEP 94



USEP 94



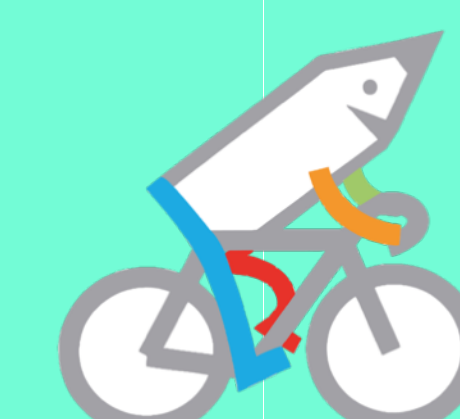
USEP 94



USEP 94



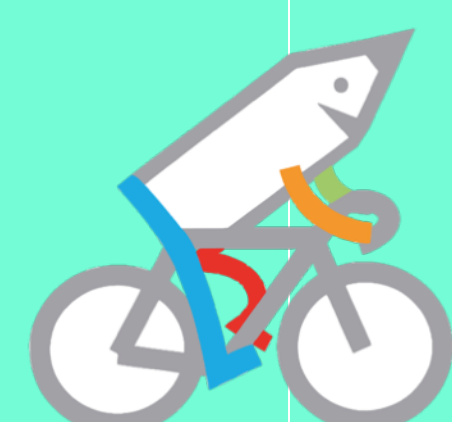
USEP 94



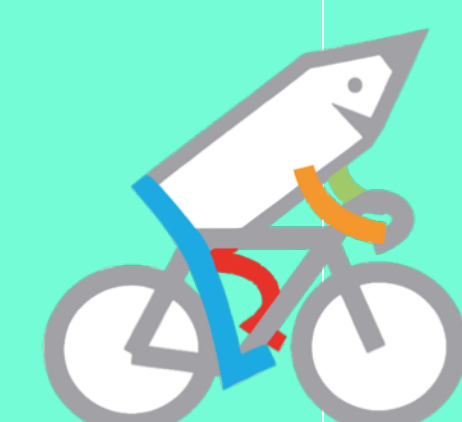
USEP 94



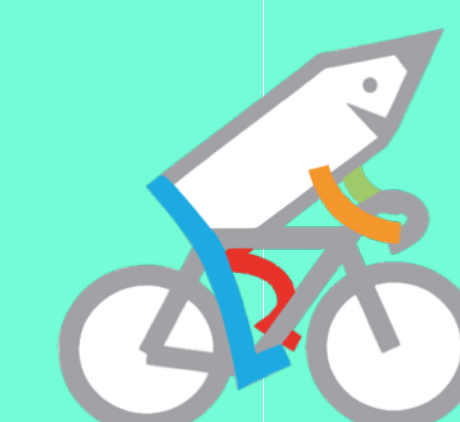
USEP 94



USEP 94



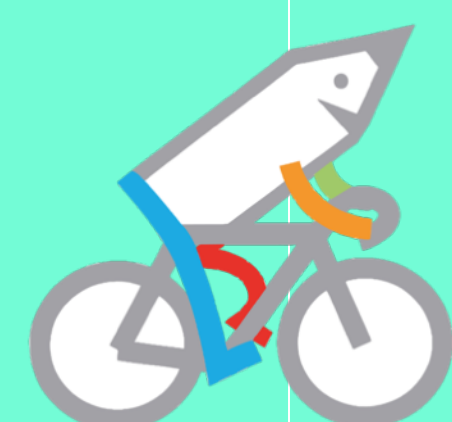
USEP 94



USEP 94



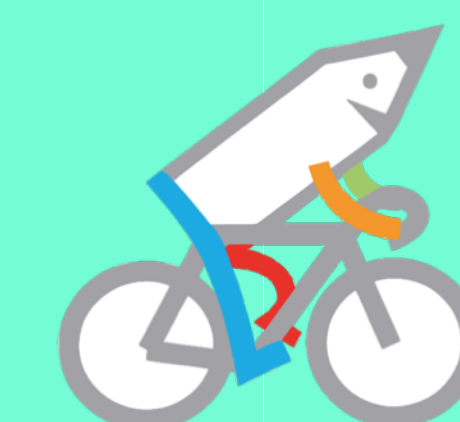
USEP 94



USEP 94



USEP 94



USEP 94